

PK 63002 EH

THE COUNTINOUS SLEWING SYSTEM INCREASES THE EFFICIENCY IN USE DURING THE CRANE'S ENTIRE LIFETIME.

LIFETIME EXCELLENCE



PROFITABLE HEAVY-DUTY CRANE TECHNOLOGY

- More lifting power due to E-HPLS
- Maximum utilisation of the working range thanks to HPSC
- Additional applications due to Power Link Plus
- Continuous slewing for increased efficiency and speed
- Increased operating times due to low maintenance extensions system





FIRST-RATE IN DESIGN AND PERFORMANCE



Coating technology

Top quality surface protection at a glance

The KTL coating lays the foundation for a perfect surface protection. Afterwards the components are either coated in the powder-coating facility or are finished with a two-components-topcoat. High value retention and excellent corrosion protection for the whole life of a crane.



Power Link Plus

High variety of uses

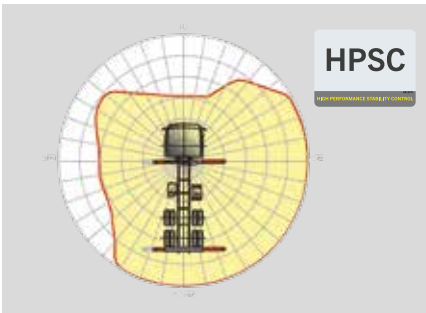
With the 15-degree reverse linkage system, you can reach through low door openings and also work inside buildings. Heavy crane work – even in difficult conditions.



Low-maintenance extension system

Reduces service time

With sliding elements made of synthetic material and the high-quality KTL coating, this boom system significantly simplifies service performed by the operator. This saves time and money – and protects the environment.



HPSC

Maximum utilisation of the working range

The variable stabiliser positioning of the High Performance Stability Control System makes it possible to utilise the lifting capacity to the maximum. It enables working within tight spaces.



High Speed Extension

For efficient assignments

The High Speed Extension speeds up the extension boom system. Crane works faster and more efficiently.



Radio remote control

Dialogue with the operator

PALFINGER radio remote controls are equipped with linear lever or cross lever and provide the greatest possible comfort for the operator. All EH models with LED-Display inform the crane operator about the different operating conditions.



Power Link cable winch

More comfort in cable winch operation

Characterised by low installation height, it is ideal for working inside buildings and transports with the crane boom unfolded. The Comfort Cable Routing reduces set-up times to a minimum.



Functional design

Practical and attractive

Robust plastic covers protect crane parts against dirt and damage. Better appearance and increased operational comfort – during the entire lifetime.



Continuous slewing system

Unrestricted movement

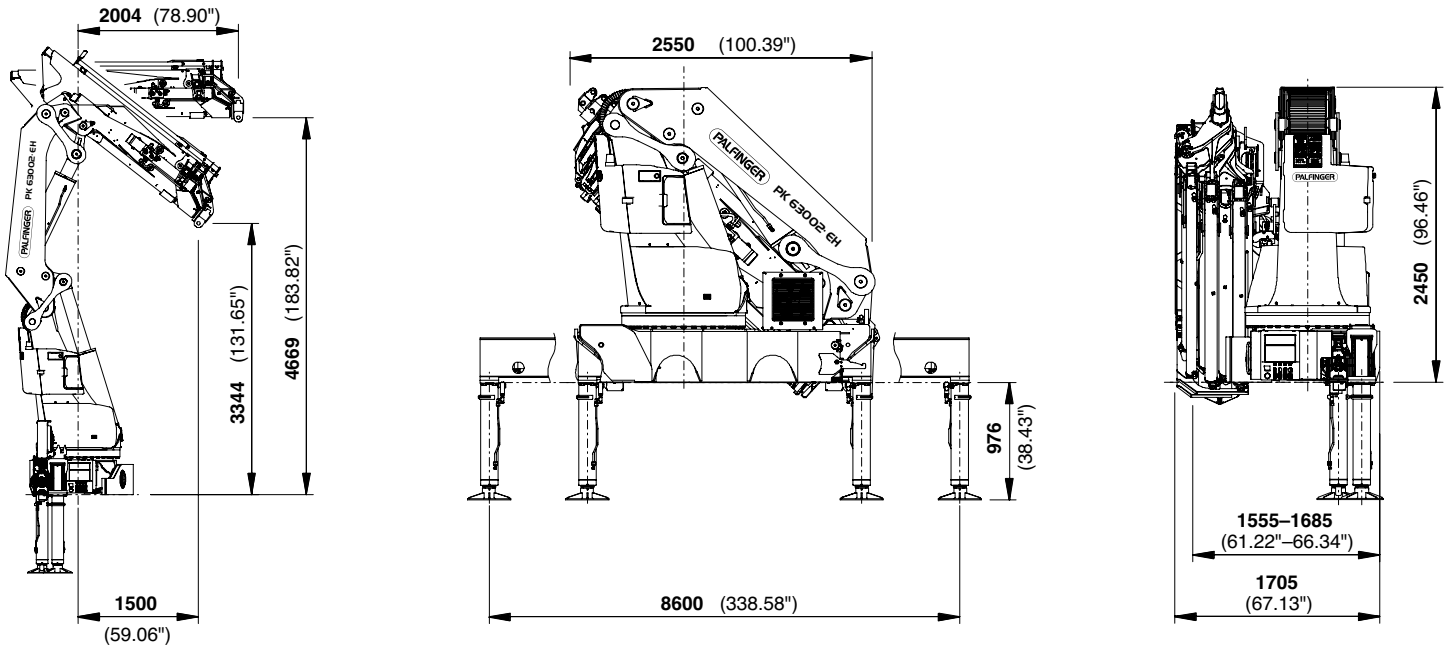
More efficient in operation due to faster loading cycles, since the crane can be slewed over a shorter distance. The crane works more efficiently and faster.

PERFECT DIMENSIONS

Technical specifications EN12999 HC1 HD4/B3

| | | | | | |
|------------------------------|-------------------|---------------|--------------------------------------|-------------------------------|--------------------------------------|
| Max. lifting moment | 59.4 mt/582.7 kNm | 429740 ft.lbs | Stabiliser spread | 8.6 m | 28' 3" |
| Max. lifting capacity | 22000 kg/215.8 kN | 48500 lbs | Fitting space required (min. / max.) | 1.56 m / 5' 1" | 1.71 m / 5' 7" |
| Max. hydraulic outreach | 20.4 m | 66' 11" | Width folded | 2.55 m | 8' 4" |
| Max. manual outreach | 25.1 m | 82' 4" | Max. operating pressure | 350 bar | 5075 psi |
| max. outreach (with fly-jib) | 30.4 m | 99' 9" | Recommended pump capacity | from 80 l/min to 100 l/min | 21.1 US gal./min 26.4 US gal./min |
| Slewing angle | endless | | Dead weight (std.) | 5040 kg | 11110 lbs |
| Slewing torque 1 gear | 4.5 mt/44.1 kNm | 32560 ft.lbs | | | |
| Slewing torque 2 gears | 7.0 mt/68.7 kNm | 50640 ft.lbs | | | |

DIMENSIONS



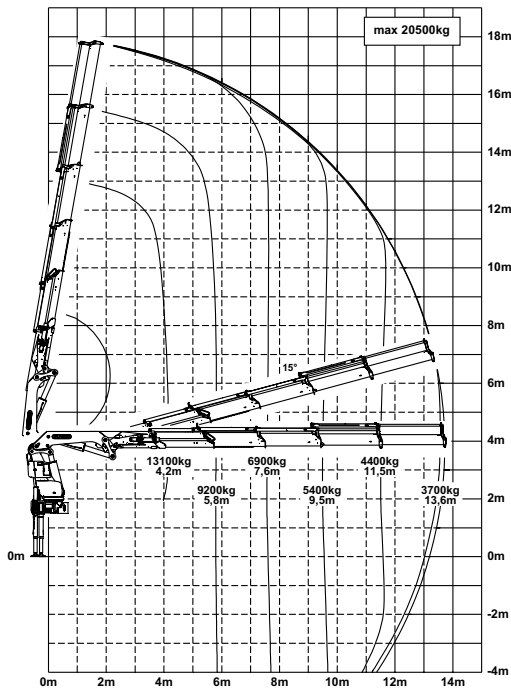
*Optional features / country-specific equipment

PK 63002

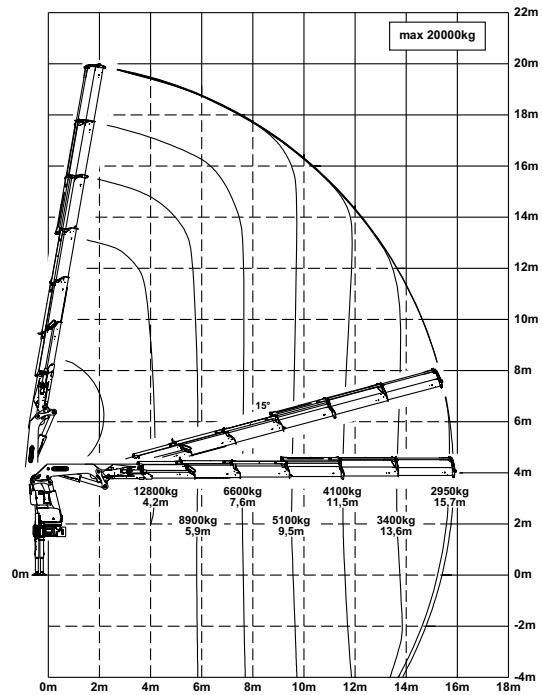
HIGH PERFORMANCE

Perfect for high outreaches.

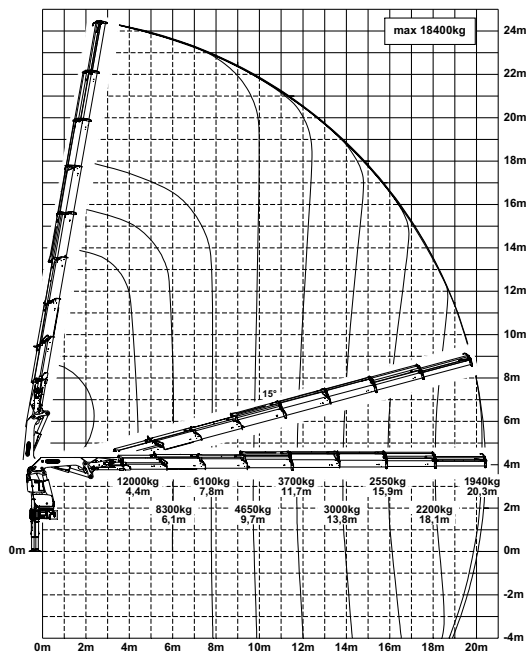
D



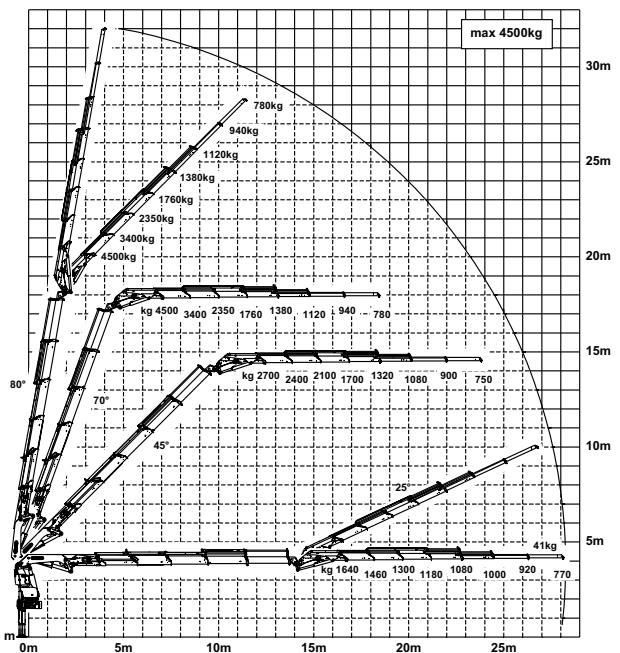
E



G



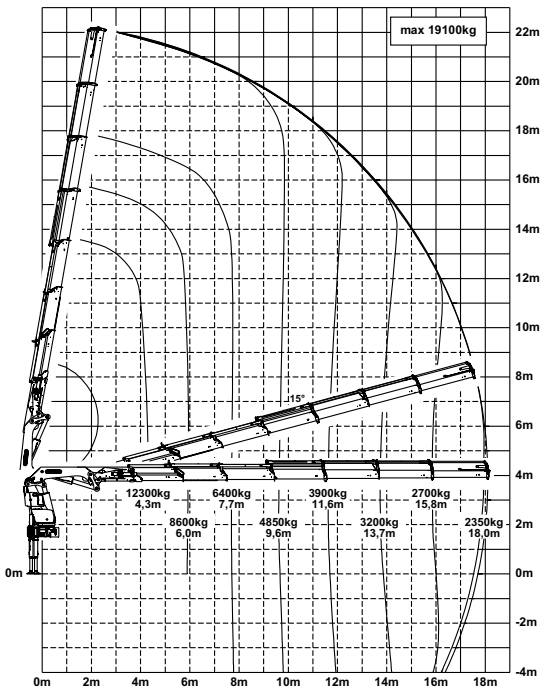
D PJ170E JV1



The outreaches stated are with a boom angle of 20° and are therefore not the maximum.

Lifting capacities

F



| max. | | 21800 kg | 48100 lbs | A |
|-------|-------|----------|-----------|---|
| 4.0 m | 13 ft | 14200 kg | 31300 lbs | |
| 5.7 m | 19 ft | 10200 kg | 22400 lbs | |
| 7.4 m | 24 ft | 7900 kg | 17300 lbs | |

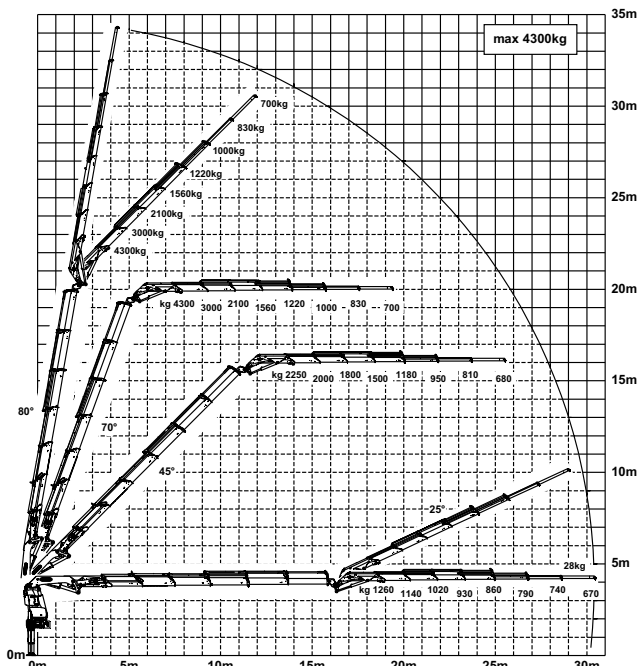
| max. | | 21500 kg | 47400 lbs | B |
|-------|-------|----------|-----------|---|
| 4.1 m | 13 ft | 13900 kg | 30600 lbs | |
| 5.7 m | 19 ft | 9900 kg | 21700 lbs | |
| 7.5 m | 24 ft | 7500 kg | 16600 lbs | |
| 9.4 m | 31 ft | 6000 kg | 13200 lbs | |

| max. | | 21300 kg | 47000 lbs | C |
|--------|-------|----------|-----------|---|
| 4.1 m | 13 ft | 13700 kg | 30100 lbs | |
| 5.7 m | 19 ft | 9600 kg | 21200 lbs | |
| 7.5 m | 24 ft | 7300 kg | 16000 lbs | |
| 9.4 m | 31 ft | 5800 kg | 12700 lbs | |
| 11.4 m | 37 ft | 4750 kg | 10400 lbs | |

| max. | | 20500 kg | 45200 lbs | D |
|--------|-------|----------|-----------|---|
| 4.2 m | 13 ft | 13100 kg | 28800 lbs | |
| 5.8 m | 19 ft | 9200 kg | 20300 lbs | |
| 7.6 m | 25 ft | 6900 kg | 15200 lbs | |
| 9.5 m | 31 ft | 5400 kg | 11900 lbs | |
| 11.5 m | 38 ft | 4400 kg | 9700 lbs | |
| 13.6 m | 45 ft | 3700 kg | 8200 lbs | |

| max. | | 20000 kg | 44100 lbs | E |
|--------|-------|----------|-----------|---|
| 4.2 m | 14 ft | 12800 kg | 28100 lbs | |
| 5.9 m | 19 ft | 8900 kg | 19600 lbs | |
| 7.6 m | 25 ft | 6600 kg | 14600 lbs | |
| 9.5 m | 31 ft | 5100 kg | 11300 lbs | |
| 11.5 m | 38 ft | 4100 kg | 9100 lbs | |
| 13.6 m | 45 ft | 3400 kg | 7500 lbs | |
| 15.7 m | 52 ft | 2950 kg | 6500 lbs | |

E PJ125E JV1



| max. | | 19100 kg | 42100 lbs | F |
|--------|-------|----------|-----------|---|
| 4.3 m | 14 ft | 12300 kg | 27200 lbs | |
| 6.0 m | 20 ft | 8600 kg | 18900 lbs | |
| 7.7 m | 25 ft | 6400 kg | 14000 lbs | |
| 9.6 m | 32 ft | 4850 kg | 10700 lbs | |
| 11.6 m | 38 ft | 3900 kg | 8500 lbs | |
| 13.7 m | 45 ft | 3200 kg | 7000 lbs | |
| 15.8 m | 52 ft | 2700 kg | 6000 lbs | |
| 18.0 m | 59 ft | 2350 kg | 5200 lbs | |

| max. | | 18400 kg | 40600 lbs | G |
|---------|-------|----------|-----------|---|
| 4.4 m | 14 ft | 12000 kg | 26300 lbs | |
| 6.1 m | 20 ft | 8300 kg | 18300 lbs | |
| 7.8 m | 26 ft | 6100 kg | 13500 lbs | |
| 9.7 m | 32 ft | 4650 kg | 10300 lbs | |
| 11.7 m | 38 ft | 3700 kg | 8100 lbs | |
| 13.8 m | 45 ft | 3000 kg | 6600 lbs | |
| 15.9 m | 52 ft | 2550 kg | 5600 lbs | |
| 18.1 m | 59 ft | 2200 kg | 4850 lbs | |
| 20.3 m | 66 ft | 1940 kg | 4300 lbs | |
| 22.6 m* | 74 ft | 1660 kg | 3650 lbs | |
| 24.9 m* | 82 ft | 1000 kg | 2200 lbs | |

*mechanical extension